




## **WOW! Coolius 2700BT**

### **Service procedure after 300h and requirements**



We strive to provide the service technician with the highest quality equipment possible, also to enjoy years of maximum profitability and problem free operation. We rely on your expertise and cooperation to help us achieve this goal.

Periodic servicing and maintenance of the equipment is imperative to achieve maximum value and return for your investment.

 Please read the operation and service manual carefully and perform the following simple periodic service and maintenance procedure when due.





# 1 300 working hours service procedure



## 1.1 300Hr Working Hr Service Kit

Art No.:

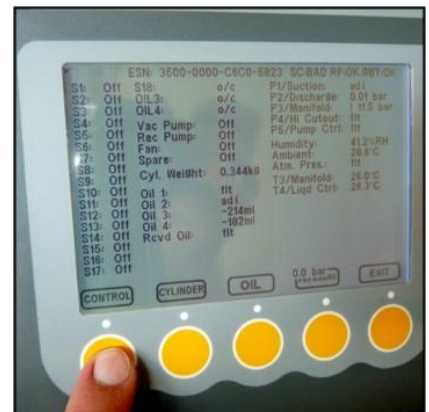
- 2pcs Cylinder hose seals
- 2pcs Service hose seals
- 1pcs Moisture trap
- 1pcs Vacuum pump oil - 600ml
- 2pcs Main filters
- 2pcs Suction and discharge service hose filter
- 1pcs Recovery pump oil (600ml)
- 1pcs Oil separator/heat exchanger
- 1pcs Discharge oil separator
- 1pcs Liquid line filter



1. Switch ON the machine main power switch. The machine will now perform a self recovery function.

2. Once the self recovery function is completed, enter in TEST mode by pressing 2, 3, 4 buttons.

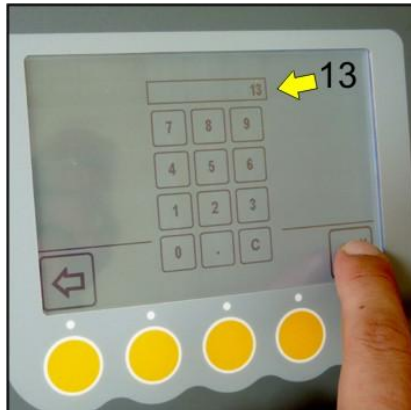
3. Press Control menu button (1).



4. Press S1-S18 button (2).



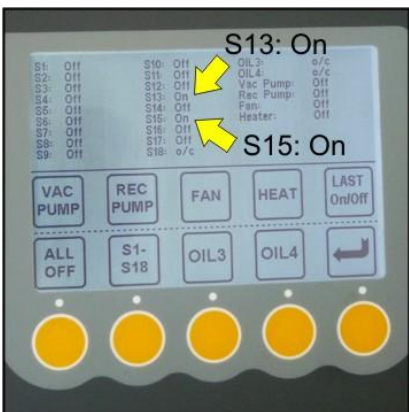
5. Open S15 valve by typing number 15 and press enter.



6. Open S13 valve by typing number 13 and press enter. Check on the valve control menu that S13 and S15 valves are open.



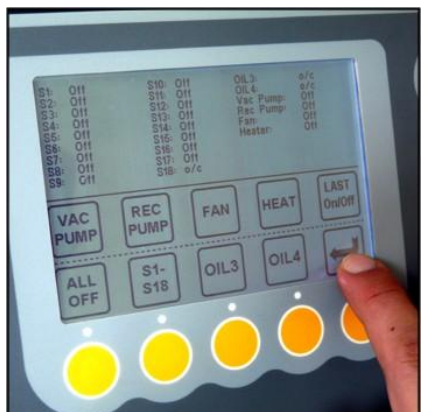
7. Wait for 10-15 seconds. Machine will now release the pressure from oil drain vessel.



8. Close ALL the solenoid valves by pressing the ALL OFF button.



9. Exit valves control mode function by pressing Enter button and then press Exit from main control menu.



10. Once this function is completed, switch of the machine.

**⚠ ATTENTION!**

if the above procedure is not allowed to be performed and completed the machine serviceable components will be under high pressure and possible injury could occur.

11. Disconnect power lead from power supply.

**⚠ ATTENTION!**

if the power lead is not disconnected from the power supply before removing protective covers from the machine, fatal injury can occur.

12. Remove the main front cover by removing three front retaining screws, two upper and one lower and two on each side of the cover, now slide cover forward.

13. Remove refrigerant cylinder cover by removing two upper retaining screws, two left and right side screws, now slide cover backwards by tilting the upper end of cover backwards first and then lift slightly to facilitate easy removal.

**⚠ ATTENTION!**

take note that the same length screws are fitted at the same place where they are removed from, if the wrong screws are fitted to the cylinder cover they will interfere with the refrigerant recovered and charge weight accuracy.

14. Remove tool tray base cover, by removing two retaining screws.



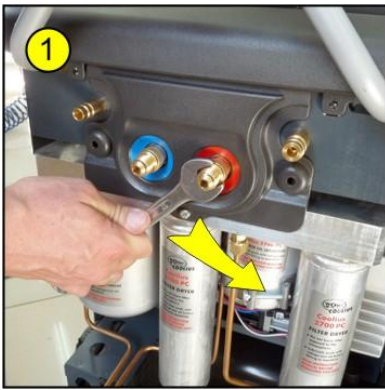
15. Visually inspect main manifold valves and connections for any possible leaks, rectify as required.

16. Visually inspect refrigerant cylinder hoses, connections and shut off valves. Replace all cylinder hose seals and any hose that shows any sign of wear and tear. Replace cylinder filter.

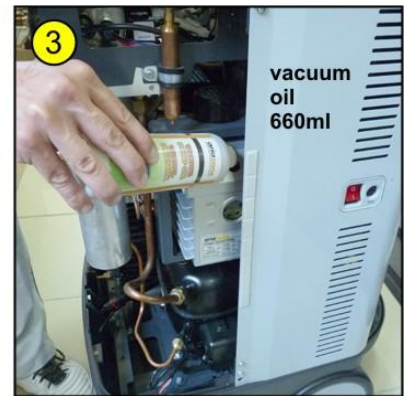
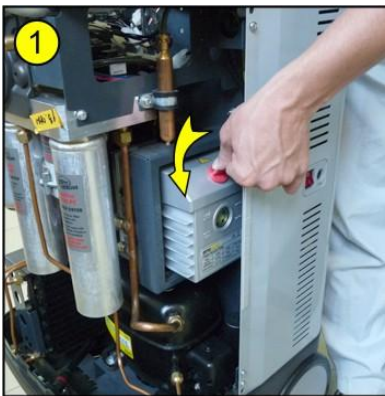


17. Inspect service hoses; replace seals and any hose that shows any sign of wear and tear.

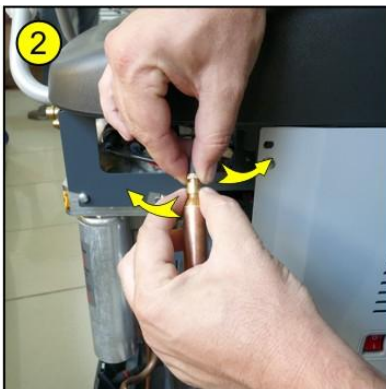
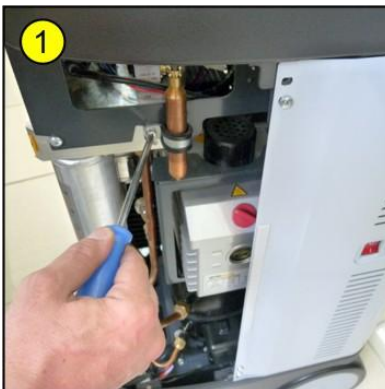
18. Replace suction and discharge service hose filters, (if fitted).



19. Inspect suction and discharge service hoses couplers for any sign of stiffness when turning the hand wheel including worn or torn seals, replace complete quick coupler assembly if necessary.
20. Check vacuum pump for any signs of oil leaks, rectify were necessary. Check vacuum pump mounting bushes for wear, replace if necessary. Drain vacuum pump oil, re-fill vacuum pump with 660ml high quality synthetic vacuum pump oil only.



21. Replace oil vessel moisture trap unit.

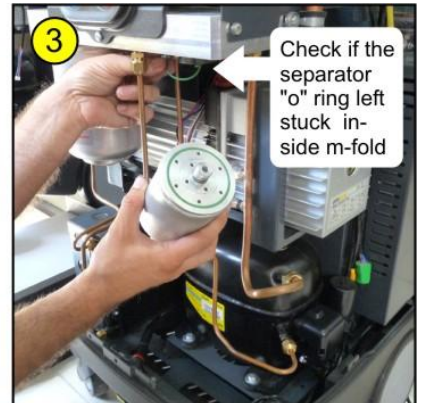
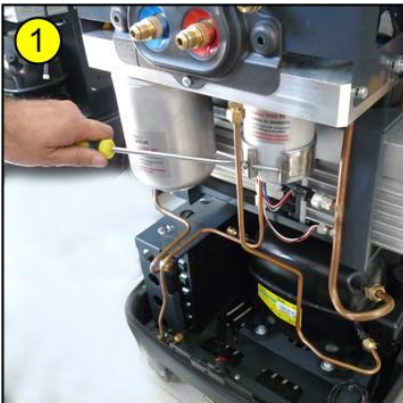


22. Remove recovery pump, making sure the correct wrenches are used for disconnecting suction and discharge pipes.

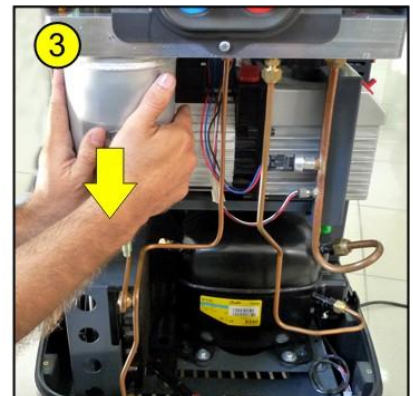
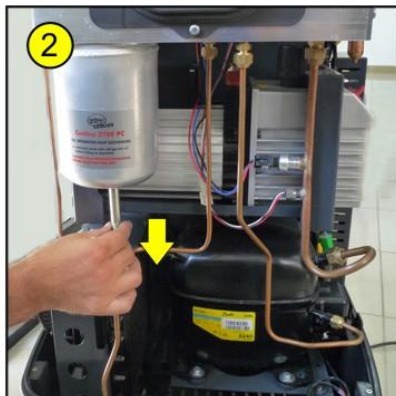
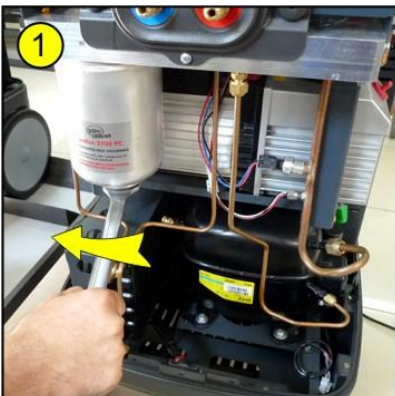
23. Remove dual main filters.



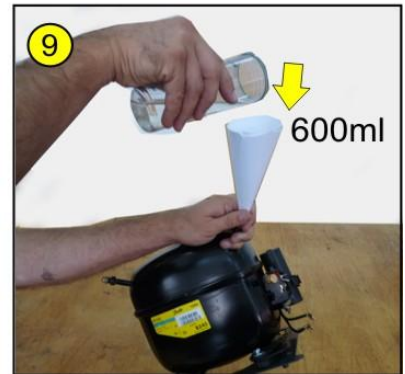
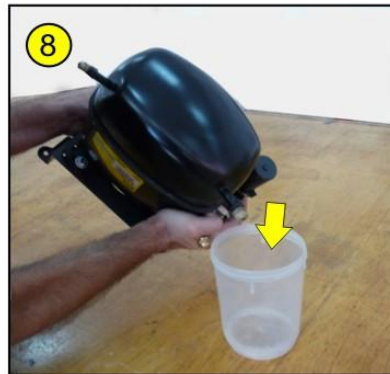
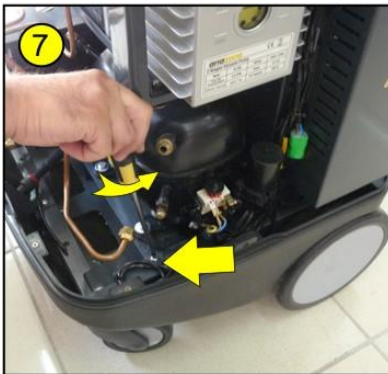
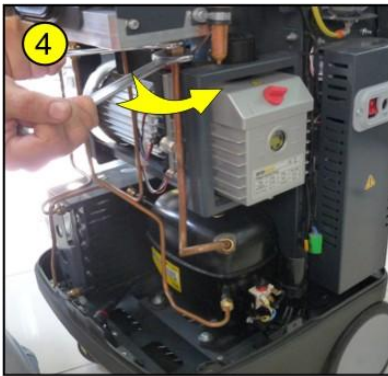
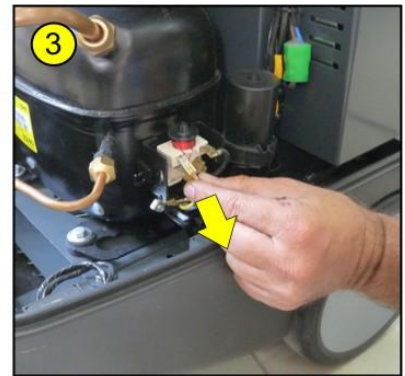
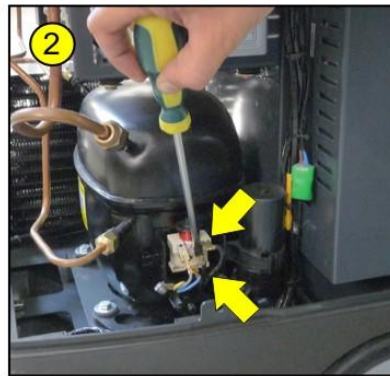
24. Disconnect the heater band from discharge filter/oil separator.



25. Remove oil separator/heat exchanger.



26. Drain and re-fill recovery pump (compressor) with 600ml compressor oil.



27. Inspect recovery pump mounting bushes for wear, replace if necessary.

28. Re-fit recovery pump making sure that suction and discharge pipes are correctly fitted and sealing.

29. Re-fit discharge filter/oil separator.

30. Re-fit oil separator/heat exchanger.

31. Re-fit main dual filters.

32. Check condition of wheels for tire wear and correct fitment to axle and chassis, replace or retention fasteners were necessary.

33. Check oil vessels cap seals for proper sealing, replace were necessary.

34. Check oil vessels for any signs of oil leaks.

35. Check power lead for any signs of damage or fraying, replace in necessary.

**⚠ ATTENTION!**

under any circumstances do not attempt to repair the power lead; it must be replaced when damaged.

36. Connect machine power lead to a suitable power supply and switch on machine.



37. Check that suction and discharge displays are displaying 0.0
38. Start self evacuation function, making sure that the suction and discharge displays reach a maximum vacuum, when the function is completed. If a maximum vacuum is not achieved check vacuum pump for correct oil level and any possible damaged filter or hose seals that may have been damaged during installation.
39. Rectify and perform self evacuation again, making sure the maximum vacuum level is achieved.
40. Double check that all service procedures have been properly performed and rectified if not correct.
41. Test calibration for correct operation.
42. Thoroughly clean machine internally.
43. Refit refrigerant cylinder cover, making sure that cylinder, cylinder strap and hoses are properly fitted and positioned, making sure not to touch cover when fitted.

**⚠ ATTENTION!**  
if the above is not correct the machine will not charge or recover accurately.

44. Run machine through its functions making sure that machine performs according to Ariazone specifications.
45. Refit front cover and tool tray base cover,
46. Thoroughly clean machine externally, including wheels.

## International Offices

**GERMANY**

WOW! Würth Online World  
GmbH  
Schliffenstraße Falkhof  
74653 Künzelsau  
☎ +49 (0) 7940/15-1770  
☎ +49 (0)7940/15-3299

**Kfz-Technik-Hotline:**

☎ 0180 / 5005078  
e-Mail: [info@wow-portal.com](mailto:info@wow-portal.com)  
<http://www.wow-portal.com>

**AUSTRIA**

Würth Handelsgesellschaft  
m.b.H.  
Würth Straße 1  
3071 Böhheimkirchen

**AUSTRIA**

☎ +43 5 08242 0  
☎ +43 5 08242 5 33 33  
e-Mail: [info@wuerth.at](mailto:info@wuerth.at)  
<http://www.wuerth.at>

**BELGIUM**

Würth België N.V.  
Everdongenlaan 29  
2300 Turnhout

☎ +32 14 445 566  
☎ +32 14 445 567  
e-Mail: [info@wurth.be](mailto:info@wurth.be)  
<http://www.wurth.be>

**BOSNIA AND HERZEGOVINA**

WURTH BH d.o.o.

Binjezevo bb  
71240 Hadzici, BiH  
☎ +387 33 775 000  
☎ +387 33 775 019  
e-Mail: [info@wurth.ba](mailto:info@wurth.ba)  
<http://www.wurth.ba>

**BULGARIA**

Würth Bulgarien EOOD  
Mladost 4  
Business Park Sofia 1  
1715 Sofia

☎ +359 2 965 99 55  
☎ +359 2 965 99 66  
e-Mail: [office@wuerth.bg](mailto:office@wuerth.bg)  
<http://www.wuerth.bg>

**CROATIA**

Würth-Hrvatska d.o.o.  
Franje Lucica 23/III  
10000 Zagreb

CROATIA  
☎ +385 1 349 87 84  
☎ +385 1 349 87 83  
e-Mail:

[wurth.hrvatska@wuerth.com.hr](mailto:wurth.hrvatska@wuerth.com.hr)  
<http://www.wuerth.com.hr>

**CYPRUS**

Würth Cyprus Ltd.  
4, Vitona Str.  
2033 Strovolos Industrial Estate  
2083 Lefkosia

☎ +357 22 512 086  
☎ +357 22 512 091  
e-Mail:  
[wuerthcy@cytanet.com.cy](mailto:wuerthcy@cytanet.com.cy)

**CZECH REPUBLIC**

Würth, spol. s r.o.  
Prumyslová zóna  
Neprevázka 137  
29301 Mladá Boleslav

☎ +420 326 345 111  
☎ +420 326 345 119  
e-Mail: [info@wuerth.cz](mailto:info@wuerth.cz)  
<http://www.wuerth.cz>

**DENMARK**

Würth Danmark A/S  
Montagevej 6  
DK-6000 Kolding

☎ +45 79 323 232  
☎ +45 79 323 242  
e-Mail: [mail@wuerth.dk](mailto:mail@wuerth.dk)  
<http://www.wuerth.dk>

**FRANCE**

Würth France SA  
Z.I. Ouest  
Rue Georges Besse - BP 13  
67158 Erstein Cedex

☎ +33 3 88 645 300  
☎ +33 3 88 64 60 94  
<http://www.wurth.fr>

**Assistance technique WOW!**

☎ +33 3 88 64 54 42  
du lundi au vendredi  
de 8h00 à 12h00 et  
de 13h30 à 17h00

**GREAT BRITAIN**

Würth U.K. Ltd.  
1 Centurion Way  
Eriith

Kent DA 18 4 AE  
☎ +44 208 319 60 00  
☎ +44 208 319 64 00  
e-Mail: [info@wurth.co.uk](mailto:info@wurth.co.uk)  
<http://www.wurth.co.uk>

**GREECE**

Würth Hellas S.A.  
23rd Klm. National Road  
Athens-Lamia  
145 68 Krioneri

☎ +30 210 6 290 800  
☎ +30 210 8 161 691  
e-Mail: [info@wurth.gr](mailto:info@wurth.gr)  
<http://www.wurth.gr>

**HUNGARY**

Würth Szereléstechnika KFT  
Gyár utca 2

2040 Budaörs  
☎ +36 23 418 130  
☎ +36 23 421 777  
e-Mail: [wuerth@wuerth.hu](mailto:wuerth@wuerth.hu)  
<http://www.wuerth.hu>

**IRELAND**

Würth Ireland Ltd.  
Monacloine Industrial Estate  
Ballysimon Road  
Limerick

☎ +353 61 430 200  
☎ +353 61 412 428  
e-Mail: [cs@wuerth.ie](mailto:cs@wuerth.ie)  
<http://www.wuerth.ie>

**ISRAEL**

Würth Israel Ltd.  
Hatothen 2  
Zone 34  
Caesarea Industrial Park  
P.O. Box 3585

☎ +972 4 632 88 00  
☎ +972 4 627 09 99  
e-Mail: [wurth@wurth.co.il](mailto:wurth@wurth.co.il)  
<http://www.wurth.co.il>

**ITALY**

Würth S.r.l.  
Bahnhofstraße 51  
39044 Neumarkt (BZ)  
☎ +39 0471 828 111  
☎ +39 0471 828 600

e-Mail: [vendite@wuerth.it](mailto:vendite@wuerth.it)  
<http://www.wuerth.it>

**Assistenza WOW!**

☎ +39 0471 827 789

**MACEDONIA**

Wuerth - Macedonia d.o.o.e.l.  
ul. Prvomajska b.b.  
1000 Skopje

☎ +389 2 272 80 80  
☎ +389 2 272 88 72  
e-Mail: [contact@wurth.com.mk](mailto:contact@wurth.com.mk)  
<http://www.wurth.com.mk>

**NETHERLANDS**

Würth Nederland B.V.  
Hef Sterrenbeeld 35  
5215 MK 's-Hertogenbosch  
Postbus 344

5201 AH 's-Hertogenbosch  
☎ +31 73 6 291 911  
☎ +31 73 6 291 922  
e-Mail: [info@wurth.nl](mailto:info@wurth.nl)  
<http://www.wurth.nl>

**NORWAY**

Würth Norge AS  
Morteveien 12,  
Gjellerasen Naeringspark  
1481 Hagan

☎ +47 464 01 500  
☎ +47 464 01 501  
e-Mail: [kontakt@wuerth.no](mailto:kontakt@wuerth.no)  
<http://www.wuerth.no>

**POLAND**

Würth Polska Sp. z o.o.  
u. Plochocinska 33  
03-044 Warszawa

☎ +48 22 5 102 000  
☎ +48 22 5 102 001  
e-Mail: [biuro@wurth.pl](mailto:biuro@wurth.pl)  
<http://www.wurth.pl>

**Portugal**

Würth Técnica de Montagem  
Lda.

Estrada Nacional, 249-4  
Abrunheira  
2710-089 Sintra

☎ +351 219 157 200  
☎ +351 219 151 331  
E-Mail: [info@wurth.pt](mailto:info@wurth.pt)  
<http://www.wurth.pt>

**SERBIA**

Würth d.o.o.  
Pancevacki put 38  
11210 Krnjaca - Beograd

☎ +381 11 2 078 200  
☎ +381 11 2 078 225  
e-Mail: [office@wurth.co.yu](mailto:office@wurth.co.yu)  
<http://www.wurth.co.yu>

**SLOVAKIA**

Würth s.r.o.  
Pribylinská ul. c. 2  
83255 Bratislava 3

☎ +421 2 49 201 211  
☎ +421 2 49 201 299  
e-Mail: [wurth@wurth.sk](mailto:wurth@wurth.sk)  
<http://www.wurth.sk>

**SWITZERLAND**

Würth AG  
Dornwydenweg 11  
4144 Arlesheim

☎ +41 61 705 91 11  
☎ +41 61 705 94 94  
e-Mail: [info@wuerth-ag.ch](mailto:info@wuerth-ag.ch)  
<http://www.wuerth-ag.ch>

**SOUTH AFRICA**

Wuerth South Africa (Pty.) Ltd.  
P.O. Box 616  
Isando 1600

Johannesburg  
☎ +27 11 281 1000  
☎ +27 11 974 6169  
e-Mail: [wurthsa@wurth.co.za](mailto:wurthsa@wurth.co.za)  
<http://www.wurth.co.za>

**TURKEY**

Würth Sanayi Ürünleri Tic. Ltd.  
Sti.

Eski Silivri Caddesi No. 46  
34535 Mimarsinan  
Büyükcemece  
☎ +90 212 866 6200  
☎ +90 212 866 84 85  
e-Mail: [info@wurth.com.tr](mailto:info@wurth.com.tr)  
<http://www.wurth.com.tr>