



WOW! Coolius 2700BT

Service procedure and requirements after 100h



Coolius 2700BT Service procedure 100h



We strive to provide the end user with the highest quality equipment possible, also to enjoy years of maximum profitability and problem free operation. We rely on your expertise and cooperation to help us achieve this goal.

Periodic servicing and maintenance of the equipment is imperative to achieve maximum value and return for your investment.

Please read the operation and service manual carefully and perform the following simple periodic service and maintenance procedure when due



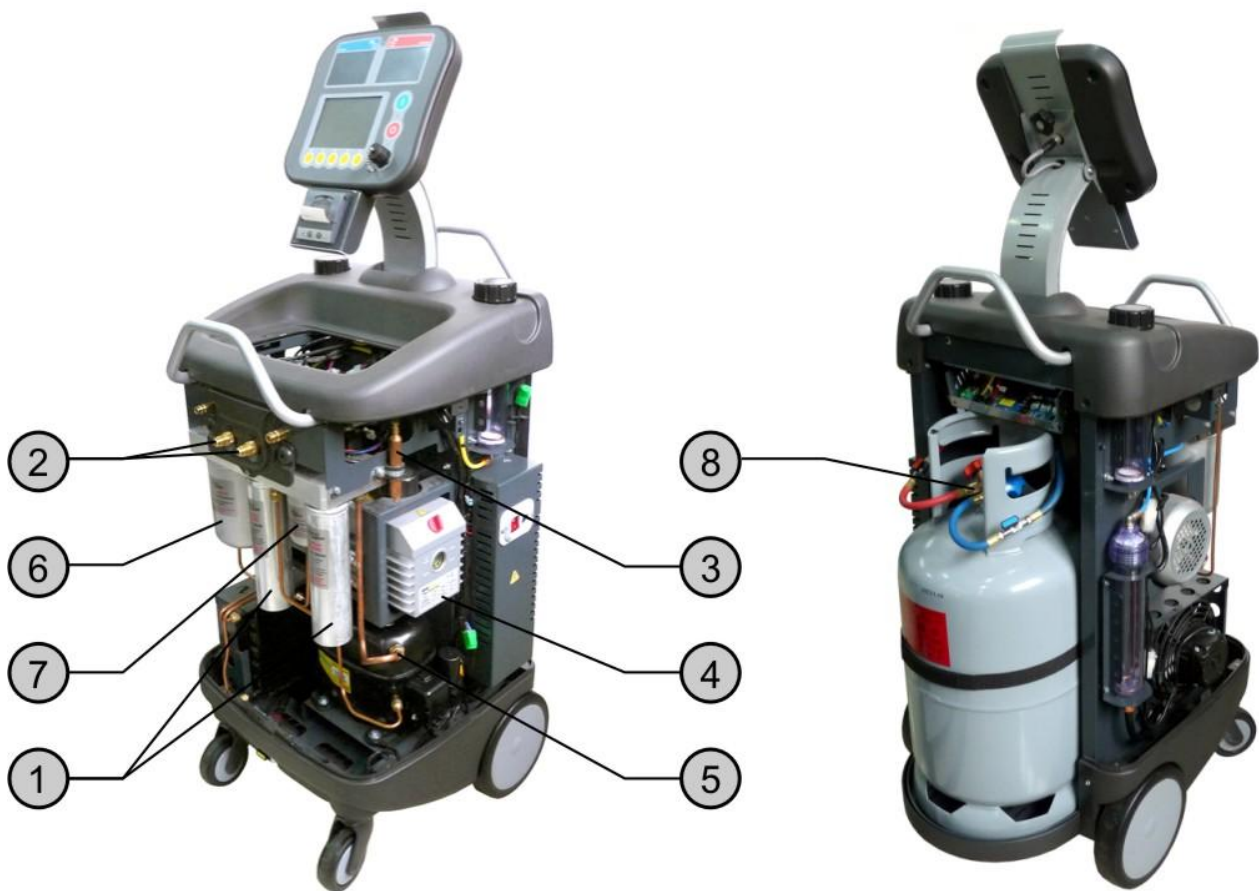
Service time indication and shut down

When the machine is switched on it will display the number of hours remaining before the periodic service is required. When the machine has reached 10 hours prior to the service interval, it will display and sound extra warning.

At this point you should advise your distributor or service agent that your equipment will require servicing, or if you choose to service the equipment yourself you must now order a service kit from your distributor or local agent. Once the machine has reached the 10 hours remaining service interval you will have approximately another two weeks before the machine will shut down. When the 100 hours have been reached, the machine will allow you to complete the last job and it will then shut down.

Once the machine has shut down it must be serviced according to manufacturer recommendation before it can be powered up and used again.

Component Location and Identification



- 1. Main primary & secondary filter dryer
- 2. Service hose particle filter
- 3. Moisture trap
- 4. Vacuum pump oil drain

- 5. Compressor oil drain/refill
- 6. Suction filter oil separator/heat exchanger
- 7. Discharge filter/oil separator
- 8. Cylinder liquid line particle filter



1 100 working hours service procedure



1.1 100Hr Working Hr Service Kit

Art No:

- 2x Cylinder hose seals
- 2x Service hose seals
- 1x Moisture filter
- 1x Vacuum pump oil - 660ml
- 2x Main filters
- 2x Suction and discharge service hose filter



1. Connect the machine to a suitable power supply and switch ON the machine main power switch. The machine will now perform a self recovery function, once this function is completed, switch of the machine and disconnect the power lead from the power supply, please follow instruction on touch screen.

⚠ ATTENTION!

if the above procedure is not allowed to be performed and completed the machine serviceable components will be under high pressure and possible injury could occur during their removal.

2. Disconnect power lead from power supply.

⚠ ATTENTION!

if the power lead is not disconnected from the power supply before removing protective covers from the machine, electric shock and/or fatal injury can occur.

3. Remove the main front cover by removing three front retaining screws, two upper, one lower and two on each side of the cover, now slide cover forward.
4. Remove refrigerant cylinder cover by removing two upper retaining screws, two left and right side screws, now slide cover backwards by tilting the upper end of cover backwards first and then lift slightly to facilitate easy removal.
5. Remove tool tray base cover, by removing two retaining screws.

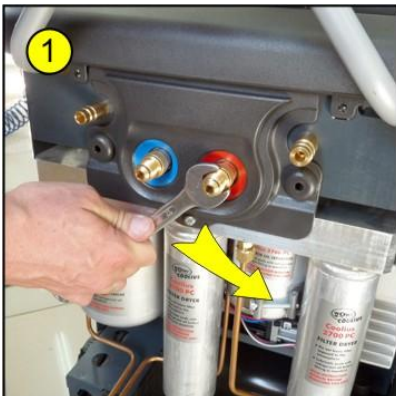


front view

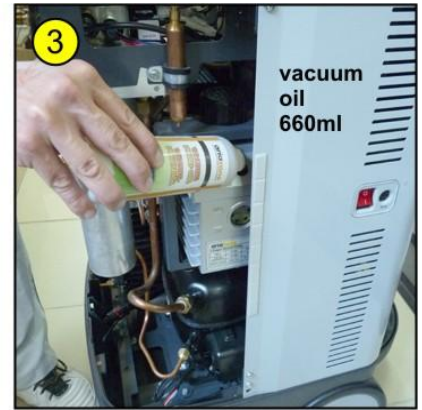
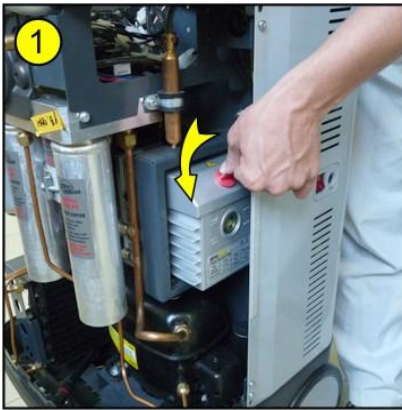
back view

top view

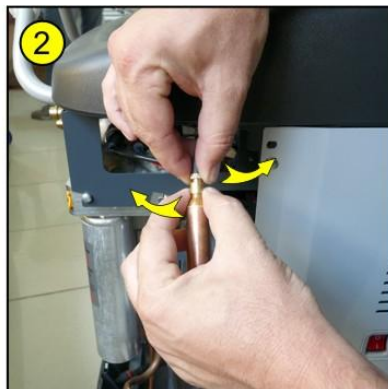
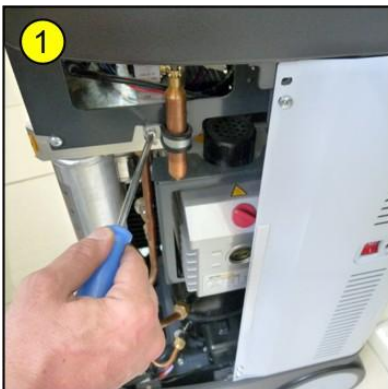
6. Visually inspect main manifold valves and connections for any possible leak, rectify as required.
7. Visually inspect refrigerant cylinder hoses for any deterioration of hoses, joints and seals.
8. Replace cylinder hose seals and any hose that shows any sign of wear and tear.
9. Inspect service hoses; replace seals and any hose that shows any sign of wear and tear.
10. Replace suction and discharge service hose particle filter, (if fitted).



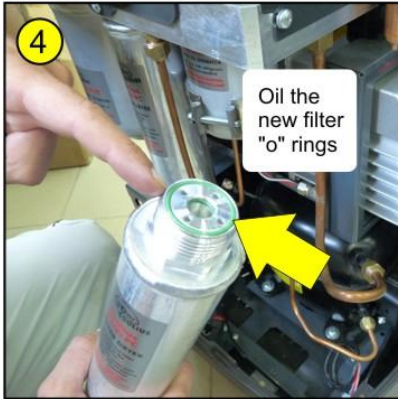
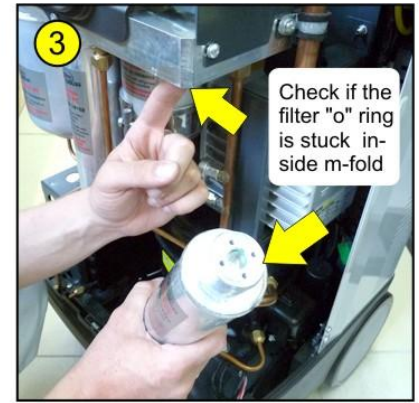
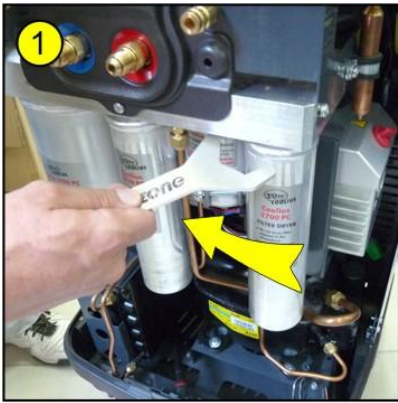
11. Inspect suction and discharge service hoses couplers for any sign of stiffness when turning the hand wheel including worn or torn seals, replace complete quick coupler assembly if necessary.
12. Check vacuum pump for any signs of oil leaks, rectify were necessary.
13. Drain vacuum pump oil, re-fill vacuum pump with high 660ml quality synthetic vacuum pump oil only.



- 14. Check vacuum pump mounting bushes for wear, replace if necessary.
- 15. Check recovery pump mounting bolts for correct tension and bushes for wear, replace mounting bushes if necessary.
- 16. Check condition of wheels for tire wear and correct fitment to axle and chassis, replace or retention fasteners were necessary.
- 17. Check oil charge vessel cap seals for proper sealing, replace cap "O" seals were necessary.
- 18. Check oil vessels for any signs of oil leaks.
- 19. Replace oil vessel moisture trap unit.



- 20. Replace main filters.



21. Check power lead for any signs of damage or fraying, replace if necessary.

⚠ ATTENTION!

Do not attempt under any circumstances to repair power lead; it must be replaced when damaged or frayed.

22. Connect machine power lead to a suitable power supply and switch on machine.

23. Check that suction and discharge displays are displaying 0.0

24. Start self evacuation function, making sure that the suction and discharge displays reach a maximum vacuum, when the function is completed. If a maximum vacuum is not achieved check vacuum pump for correct oil level and any possible damaged filter or hose seals that may have been damaged during installation.

Rectify and perform self evacuation again, making sure the maximum vacuum level is achieved.

25. Double check that all service procedures have been performed correctly, rectify if required.

26. Test calibration for correct operation.

27. Carefully clean machine internally.

28. Refit refrigerant cylinder cover, making sure that cylinder, cylinder strap and hoses are properly fitted and positioned, making sure not to touch chassis or cover when fitted.

⚠ ATTENTION

if the above is not correct the machine will not charge or recover correctly.

29. Run machine through its functions making sure that machine performs according to its specifications.

30. Refit front cover and tool tray base cover,

31. Clean machine externally, including wheels.



International Offices

GERMANY

WOW! Würth Online World GmbH
Schliffenstraße Falkhof
74653 Künzelsau
☎ +49 (0) 7940/15-1770
☎ +49 (0)7940/15-3299
Kfz-Technik-Hotline:
☎ 0180 / 5005078
e-Mail: info@wow-portal.com
<http://www.wow-portal.com>

AUSTRIA

Würth Handelsgesellschaft m.b.H.
Würth Straße 1
3071 Böheimkirchen
AUSTRIA
☎ +43 5 08242 0
☎ +43 5 08242 5 33 33
e-Mail: info@wuerth.at
<http://www.wuerth.at>

BELGIUM

Würth België N.V.
Everdongenlaan 29
2300 Turnhout
☎ +32 14 445 566
☎ +32 14 445 567
e-Mail: info@wurth.be
<http://www.wurth.be>

BOSNIA AND HERZEGOVINA

WURTH BH d.o.o.
Binjezevo bb
71240 Hadzici, BiH
☎ +387 33 775 000
☎ +387 33 775 019
e-Mail: info@wurth.ba
<http://www.wurth.ba>

BULGARIA

Würth Bulgarien EOOD
Mladost 4
Business Park Sofia 1
1715 Sofia
☎ +359 2 965 99 55
☎ +359 2 965 99 66
e-Mail: office@wuerth.bg
<http://www.wuerth.bg>

CROATIA

Würth-Hrvatska d.o.o.
Franje Lucica 23/III
10000 Zagreb
CROATIA
☎ +385 1 349 87 84
☎ +385 1 349 87 83
e-Mail:
wurth.hrvatska@wuerth.com.hr
<http://www.wuerth.com.hr>

CYPRUS

Würth Cyprus Ltd.
4, Vitona Str.
2033 Strovolos Industrial Estate
2083 Lefkosia
☎ +357 22 512 086
☎ +357 22 512 091
e-Mail:
wuerthcy@cytanet.com.cy

CZECH REPUBLIC

Würth, spol. s r.o.
Prumyslová zóna
Neprevázka 137
29301 Mladá Boleslav
☎ +420 326 345 111
☎ +420 326 345 119
e-Mail: info@wuerth.cz
<http://www.wuerth.cz>

DENMARK

Würth Danmark A/S
Montagevej 6
DK-6000 Kolding
☎ +45 79 323 232
☎ +45 79 323 242
e-Mail: mail@wuerth.dk
<http://www.wuerth.dk>

FRANCE

Würth France SA
Z.I. Ouest
Rue Georges Besse - BP 13
67158 Erstein Cedex
☎ +33 3 88 645 300
☎ +33 3 88 64 60 94
<http://www.wurth.fr>
Assistance technique WOW!
☎ +33 3 88 64 54 42
du lundi au vendredi
de 8h00 à 12h00 et
de 13h30 à 17h00

GREAT BRITAIN

Würth U.K. Ltd.
1 Centurion Way
Erith
Kent DA 18 4 AE
☎ +44 208 319 60 00
☎ +44 208 319 64 00
e-Mail: info@wurth.co.uk
<http://www.wurth.co.uk>

GREECE

Würth Hellas S.A.
23rd Klm. National Road
Athens-Lamia
145 68 Krioneri
☎ +30 210 6 290 800
☎ +30 210 8 161 691
e-Mail: info@wurth.gr
<http://www.wurth.gr>

HUNGARY

Würth Szereléstechnika KFT
Gyár utca 2
2040 Budaörs
☎ +36 23 418 130
☎ +36 23 421 777
e-Mail: wuerth@wuerth.hu
<http://www.wuerth.hu>

IRELAND

Würth Ireland Ltd.
Monaclooe Industrial Estate
Ballysimon Road
Limerick
☎ +353 61 430 200
☎ +353 61 412 428
e-Mail: cs@wuerth.ie
<http://www.wuerth.ie>

ISRAEL

Würth Israel Ltd.
Hatothen 2
Zone 34
Caesarea Industrial Park
P.O. Box 3585
☎ +972 4 632 88 00
☎ +972 4 627 09 99
e-Mail: wurth@wurth.co.il
<http://www.wurth.co.il>

ITALY

Würth S.r.l.
Bahnhofstraße 51
39044 Neumarkt (BZ)
☎ +39 0471 828 111
☎ +39 0471 828 600
e-Mail: vendite@wuerth.it
<http://www.wuerth.it>

Assistenza WOW!

☎ +39 0471 827 789

MACEDONIA

Würth - Macedonia d.o.o.e.l.
ul. Prvomajska b.b.
1000 Skopje
☎ +389 2 272 80 80
☎ +389 2 272 88 72
e-Mail: contact@wurth.com.mk
<http://www.wurth.com.mk>

NETHERLANDS

Würth Nederland B.V.
Het Sterrenbeeld 35
5215 MK 's-Hertogenbosch
Postbus 344
5201 AH 's-Hertogenbosch
☎ +31 73 6 291 911
☎ +31 73 6 291 922
e-Mail: info@wurth.nl
<http://www.wurth.nl>

NORWAY

Würth Norge AS
Morteveien 12,
Gjellerasen Naeringspark
1481 Hagan
☎ +47 464 01 500
☎ +47 464 01 501
e-Mail: kontakt@wuerth.no
<http://www.wuerth.no>

POLAND

Würth Polska Sp. z o.o.
u. Plochocinska 33
03-044 Warszawa
☎ +48 22 5 102 000
☎ +48 22 5 102 001
e-Mail: biuro@wurth.pl
<http://www.wurth.pl>

PORTUGAL

Würth Técnica de Montagem Lda.
Estrada Nacional, 249-4
Abrunheira
2710-089 Sintra
PORTUGAL
☎ +351 219 157 200
☎ +351 219 151 331
E-Mail: info@wurth.pt
<http://www.wurth.pt>

SERBIA

Würth d.o.o.
Pancevacki put 38
11210 Krnjaca - Beograd
☎ +381 11 2 078 200
☎ +381 11 2 078 225
e-Mail: office@wurth.co.yu
<http://www.wurth.co.yu>

SLOVAKIA

Würth s.r.o.
Pribylinská ul. c. 2
83255 Bratislava 3
☎ +421 2 49 201 211
☎ +421 2 49 201 299
e-Mail: wurth@wurth.sk
<http://www.wurth.sk>

SWITZERLAND

Würth AG
Dornwydenweg 11
4144 Arlesheim
☎ +41 61 705 91 11
☎ +41 61 705 94 94
e-Mail: info@wuerth-ag.ch
<http://www.wuerth-ag.ch>

SOUTH AFRICA

Würth South Africa (Pty.) Ltd.
P.O. Box 616
Isando 1600
Johannesburg
☎ +27 11 281 1000
☎ +27 11 974 6169
e-Mail: wurthsa@wurth.co.za
<http://www.wurth.co.za>

TURKEY

Würth Sanayi Ürünleri Tic. Ltd. Sti.
Eski Silivri Caddesi No. 46
34535 Mimarsinan
Büyücekmece
☎ +90 212 866 6200
☎ +90 212 866 84 85
e-Mail: info@wurth.com.tr
<http://www.wurth.com.tr>