



# VEHICLE DIAGNOSTICS WOW! LOOQIT

## UPDATE 5.39.00

23.01.2024

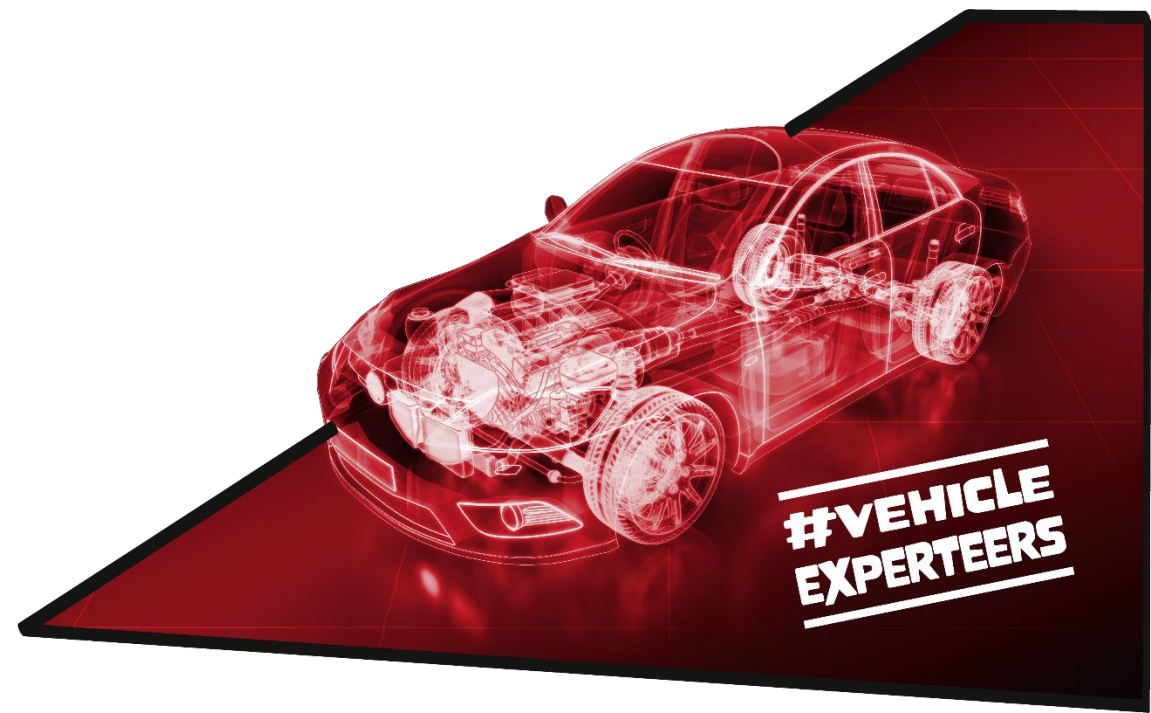
[Diagnostic Update](#)

[BEV & Hybrid](#)

[Technical Data News](#)

[Calibration system ACS cars](#)

[Security Gateway](#)



# DIAGNOSTIC UPDATE



# DIAGNOSTIC UPDATE

## WOW! LOOQIT 5.39.00

- The diagnostic database of **WOW! LOOQIT 5.39.00** supports **1,626 vehicle models** from **73 manufacturers**. 20 additional new vehicles since the last diagnostic update in August 2023.
- Vehicles that receive diagnostic functions with the current update
  - Citroën Ami, C4X [22-], C5 X
  - Fiat 124 Spider, Doblo [22-]
  - Ford Bronco [21-], F-150 [15-20], F-150 [21-]
  - KIA Sorento [21-]
  - **Maxus** E-Deliver 3, E-Deliver 9, Euniq 5, Euniq 6, T90 EV
  - Nissan X-Trail T33 [21-]
  - Opel Vauxhall Rocks-e
  - Peugeot 408 [22-]
  - Toyota Aygo [14-22], Aygo X [22-], BZ4X [22-], Corolla Cross [22-], Yaris Cross [21-]
- All new diagnostic entries are marked within the software!



# DIAGNOSTIC UPDATE

WOW! LOOQIT 5.39.00

- A new manufacturer in the **WOW! LOOQIT 5.39.00 – MAXUS (SAIC)**
  - E-Deliver 3, T90 EV, E-Deliver 9, Euniq 5, Euniq 6,



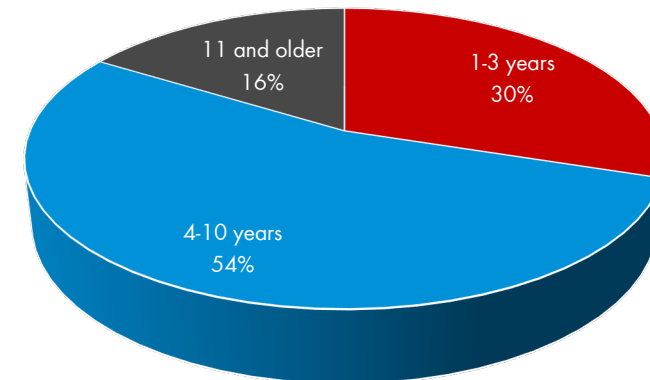
# DIAGNOSTIC UPDATE

WOW! LOOQIT 5.39.00

As with every update, the focus of development is on new and "middle-aged" models. The oldest revised systems date back to 2020!

Age	Update distribution
<b>0 - 3</b>	30,0%
<b>4 - 10</b>	53,8%
<b>11 and older</b>	16,3%

Vehicle age and diagnostic enhancements



■ 1-3 years ■ 4-10 years ■ 11 and older

# DIAGNOSTIC UPDATE

WOW! LOOQIT 5.39.00

The sales figures of hybrid and high-voltage vehicles are also reflected in our development efforts. The systems with the greatest growth are again:

**Electric vehicles with 4,67 %**



**ADAS calibration with 2,27 %**



# DIAGNOSTIC EXAMPLES

## WOW! LOOQIT 5.39.00

### **Maxus** New brand with basic functionality

- eDeliver 9 (LCV)
- eDeliver 3 (LCV)
- T90 EV (LCV)
- Euniq 5
- Euniq 6

### **Mazda**

- CX-5 – updated engines, gearboxes, brakes, airbag, SLR and more

### **Citroën**

- Ami – new model
- C3 4, Aircross – new engine HMR

### **Nissan**

- Townstar 2021-> updated with several systems.
- Qashqai HJ12 – updated with ePower (EV/HEV)
- X-Trail HT33 – updated with ePower (EV/HEV)

### **Audi**

- A3 2013-2020, Q4, e-tron – rear camera calibration, TT 2015-2018 – ADAS calibration

### **Volkswagen**

- Polo 17- – CNG engine reset function
- e-UP – camera calibration
- ID.3, ID.4, ID.5, Passat B7, Tiguan MK1, Sharan MK2, Golf VIII & VII – rear camera calibration

### **FAL**

- 500x – year model update + new engine
- Tipo – camera calibration
- Doblo EV 2022
- Alfa Giulia – new engine added

### **Peugeot**

- 408 2022 – new model
- 208, 2008, 301 and 308 III – petrol and/or diesel engine added

### **Toyota**

- BZ4X – new model full functionality on several systems
- Corolla Cross – new camera system, camera calibration

### **Kia**

- Sorento 21- – new model
- Niro 19- – electric parking brake service position
- Stonic 18- – dynamic camera calibration

### **Cupra**

- Born, Formentor – rear camera calibration

### **Seat**

- Alhambra MK2, Leon III & IV, Mii, Tarraco – rear camera calibration

### **Škoda**

- Citigo, Superb B6, Kodiaq, Octavia III & IV – rear camera calibration

# BEV & HYBRID



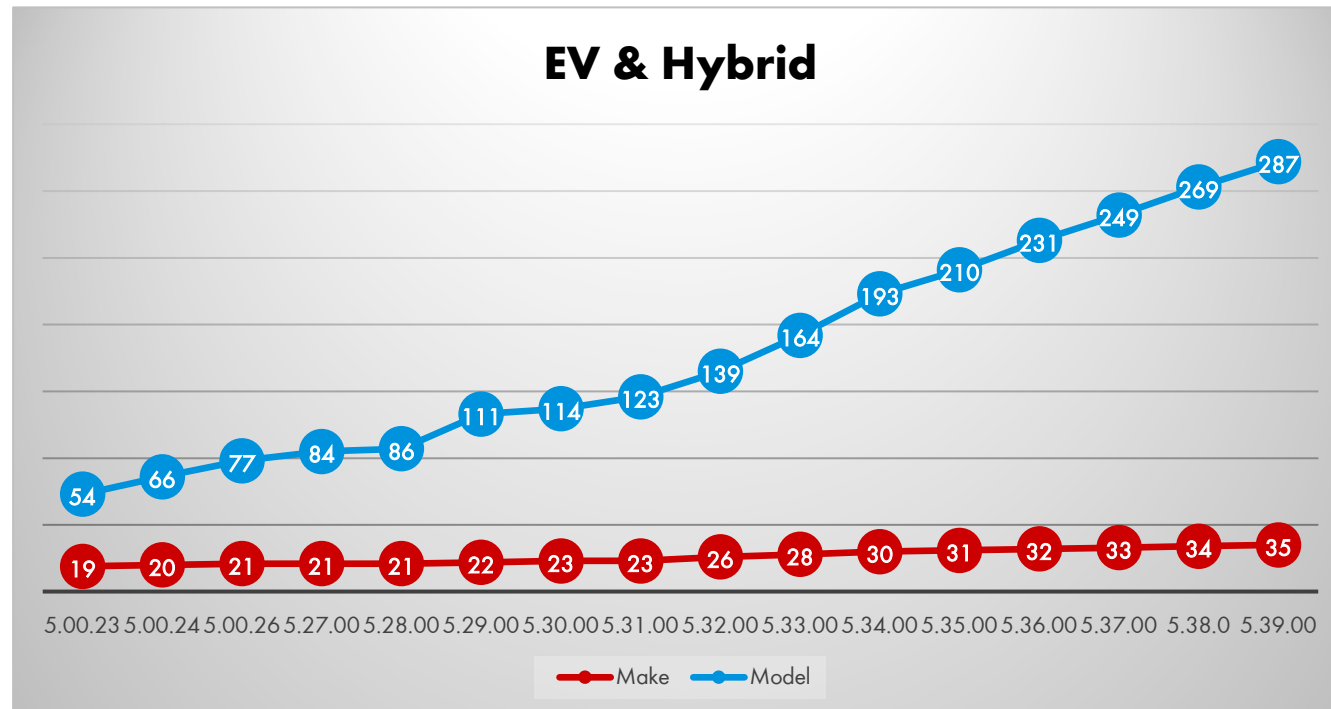


# SOFTWARE UPDATE NEWS

WOW! LOOQIT 5.39.00

## Electromobility

With diagnostics for hybrid and fully electric drives, battery and charging management, we now support a total of 287 different vehicle models from 35 manufacturers.

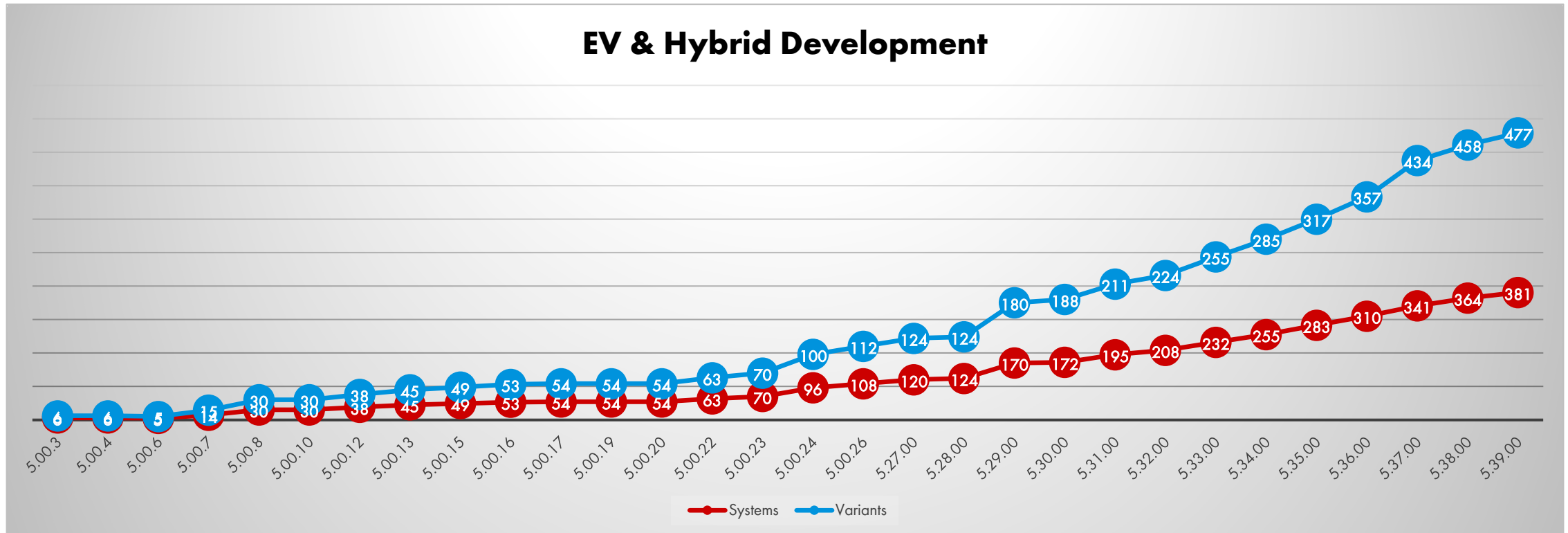


# SOFTWARE UPDATE NEWS

WOW! LOOQIT 5.39.00

## Electromobility

The development dynamics are remarkable! As the number of BEV and hybrid vehicles on the market increases, we are also pushing the pace of development! We have our finger on the pulse!



# TECHNICAL DATA



# SOFTWARE UPDATE TECHNICAL DATA

WOW! LOOQIT 5.39.00



## Technical Data ONLINE

Version LOOQIT 5.39.00 is a milestone of a special kind!

For the first time, technical data is collected online within the software and displayed in the software in addition to the installed data set!

We start with **battery data!**

Both starter and drive battery data are seamlessly integrated into the system! You won't notice the difference as long as your WOW! LOOQIT is online!

## Example vehicles currently being enriched ONLINE:

BMW iX, BMW iX3, Mercedes EQC, Mazda MX30

More services will follow!

# SOFTWARE UPDATE TECHNICAL DATA



WOW! LOOQIT 5.39.00

Technical Data **OFFLINE**



WOW! LOOQIT 5.39.00

VIN Mercedes Benz EQC (293) .. [20-23] All electro drive

START

POWERSEARCH Example: Engine code / System / Components / ...

Mercedes Benz EQC (293) [20-23]

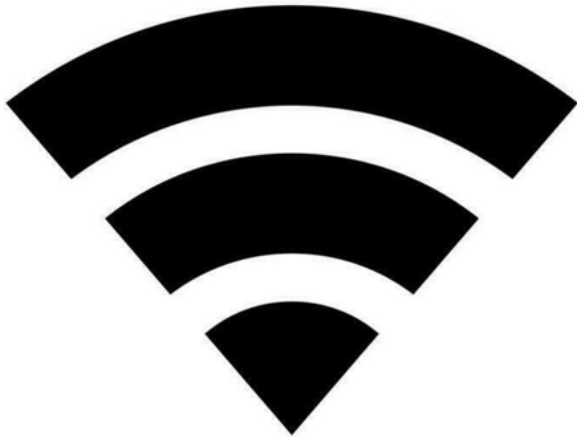
KW(HP)	Injection system	Fuel	Model year	Equipment
300 (408)	Electrical motor	EV	2020 - 2023	→
300 (408)		EV	2019 - 2022	→
300 (408)		EV	2019 - 2022	→

# SOFTWARE UPDATE TECHNICAL DATA

WOW! LOOQIT 5.39.00



Technical Data **ONLINE**



The screenshot displays the WOW! LOOQIT 5.39.00 software interface. The top navigation bar includes icons for home, car, truck, bus, and OBCFM. The VIN field is set to Mercedes Benz, and the model is EQC (293). The system is identified as electro drive. The main content area is titled "Electric vehicle (EV) battery pack" and contains a "TECHNICAL DATA LIST" with the following items: location, tools, precautions, servicing, electric vehicle (EV) battery pack disconnection/isolation, and electric vehicle (EV) battery pack connection. A sidebar menu on the left lists various service functions, with "Parking brake" and "Battery" circled in red. The right pane shows detailed technical data for the battery pack, including location, special tools (electrical test meter, test lead adapters, padlock), safety precautions (warning of high voltage), vehicle servicing instructions, and specific steps for battery pack disconnection/isolation.

**TECHNICAL DATA LIST**

- location
- tools
- precautions
- servicing
- electric vehicle (EV) battery pack disconnection/isolation
- electric vehicle (EV) battery pack connection

**Battery location**

Location [Fig. 1](#)

**Special tools**

- Electrical test meter
- Test lead adapter 1 - No.242 589 00 63 00.
- Test lead adapter 2 - No.000 589 94 63 00.
- Padlock

**Safety precautions**

- WARNING: Electric vehicle (EV) battery pack contains HIGH VOLTAGE [Fig. 2](#).
- When working on high voltage circuits and components ensure the following safety related guidelines are adhered to:

**Electric drive system high voltage wiring harness covered with orange insulation.**

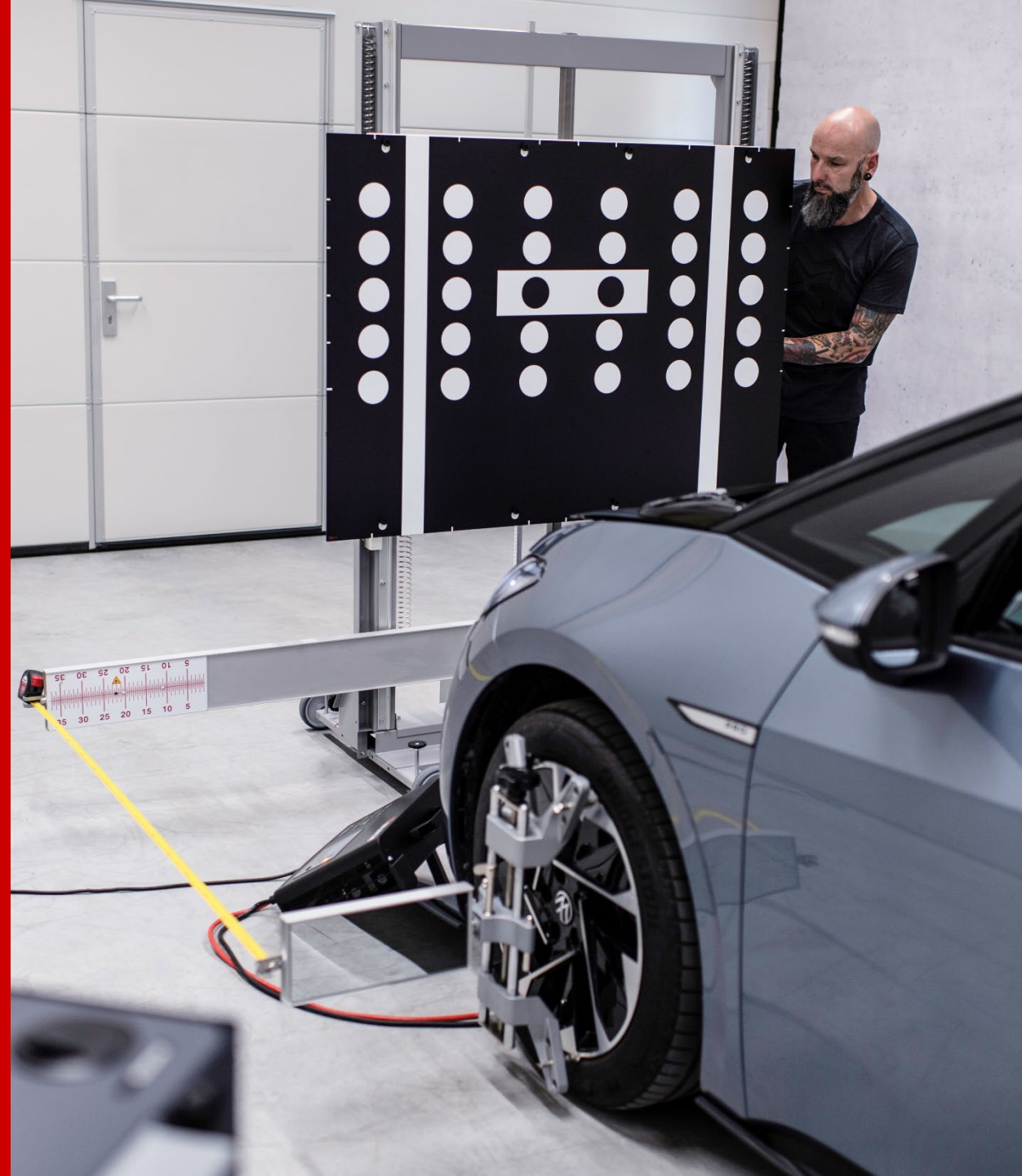
**Vehicle servicing**

- Electric vehicle (EV) battery pack disconnection NOT required before carrying out the following procedure(s):
  - Regular service and maintenance operations.
  - Main vehicle battery disconnection.

**Electric vehicle (EV) battery pack disconnection/isolation**

- Ensure ignition switched OFF and vehicle keys removed from vehicle interior.
- Open bonnet.
- Remove engine compartment cover [Fig. 3](#).
- Disconnect EV battery pack isolator [Fig. 3](#).
- Secure EV battery pack isolator with padlock to prevent accidental connection [Fig. 3](#).
- Wait 5 minutes.
- Switch ignition ON.
- Raise vehicle.
- Remove rear protective cover from underneath the vehicle [Fig. 3](#).
- Detach EV battery pack harness support bracket [Fig. 3](#).
- Disconnect EV battery pack harness multi-plug [Fig. 3](#).

# CALIBRATION SYSTEM ACS CARS



# SOFTWARE UPDATE NEWS

WOW! LOOQIT 5.39.00

# HUNTER Engineering Company



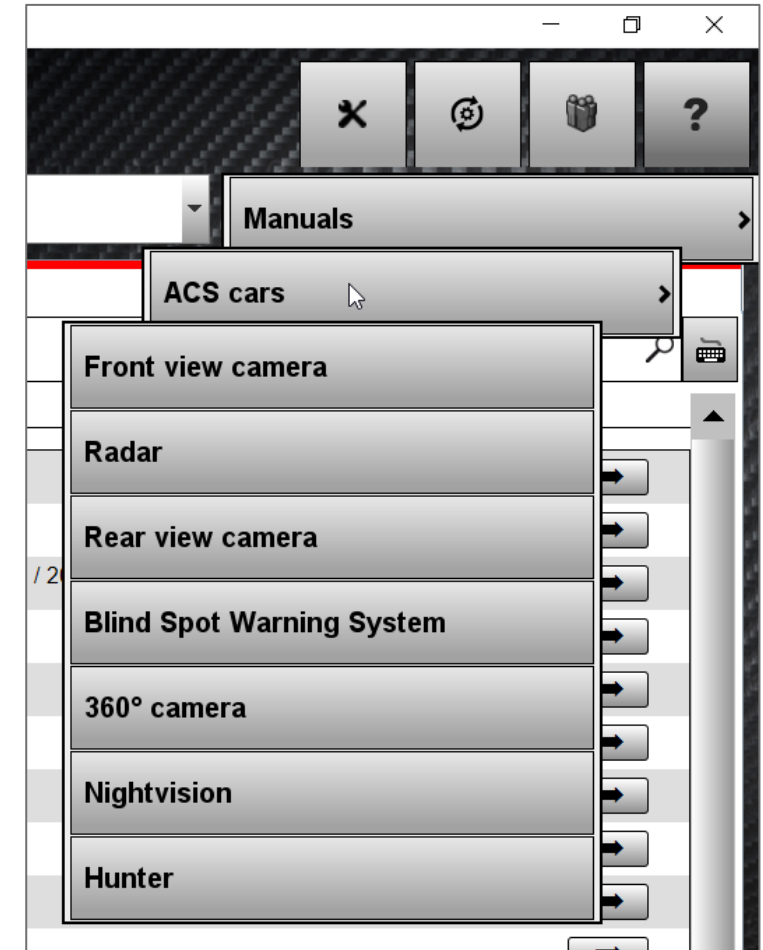
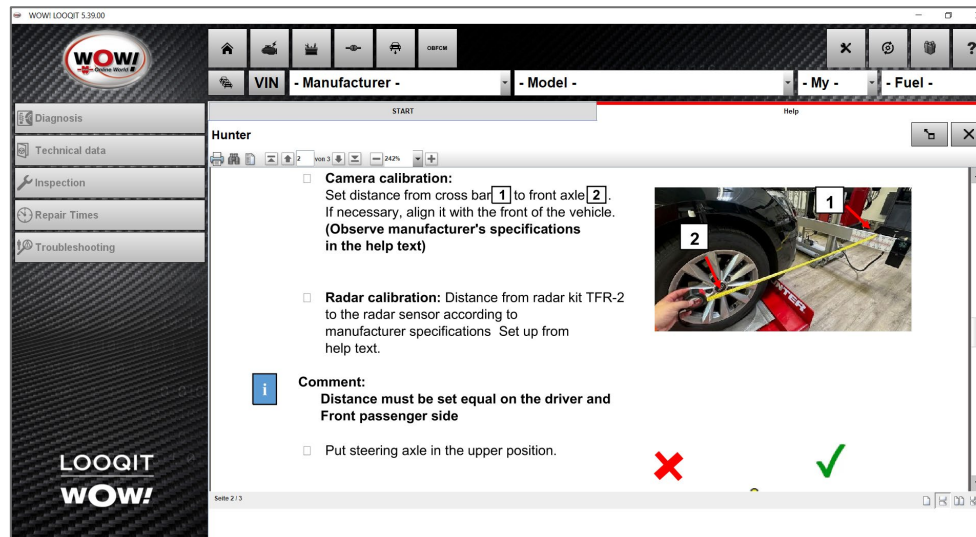
## WOW! ACS Cars Hunter

You probably already knew! WOW! ACS Cars can be used in conjunction with Hunter wheel alignment platforms.

You can find out what you need to consider and how the adjustment process works in the "Hunter" user guide in our manual section!

## Do you have any questions on this topic?

Contact our sales department!





# SOFTWARE UPDATE NEWS

WOW! LOOQIT 5.39.00

## ACS cars – New camera calibrations for

- Audi TT [15-]
- Citroën C4X [22-]
- Fiat Doblo [22-]
- Iveco Daily VII
- MG EHS
- MG MARVEL
- MG MG 5
- MG ZS [2020-]
- Seat Mii
- Škoda Citigo
- Toyota Aygo X [22-]
- Toyota BZ4X [22-]
- Toyota Corolla Cross [22-]
- Toyota Yaris Cross [21-]
- Volkswagen Up



# SOFTWARE UPDATE NEWS

WOW! LOOQIT 5.39.00

## ACS cars – New radar calibrations for

- Audi TT [15-]
- BMW Z4 [G29]
- Citroën C4X [22-]
- Mercedes A-Class [W176]
- Mercedes AMG GT [W190]
- Mercedes B-Class [W242]
- Mercedes B-Class [W246]
- Mercedes CLA-Class [C117]
- Mercedes GLC [X254]
- Mercedes GL-Class [X164]
- Mercedes GL-Class [X166]
- Peugeot 408 [22-]
- Seat Mii
- Škoda Citigo

- Toyota Aygo X [22-]
- Toyota BZ4X [22-]
- Toyota Corolla Cross [22-]
- Toyota Yaris Cross [21-]
- Volkswagen Passat CC
- Volkswagen Tiguan [08-16]
- Volkswagen Up



# SECURITY GATEWAY PORTAL





# SGP – AVAILABLE BRANDS

WOW! LOOQIT 5.39.00

All available security gateway vehicle brands are listed in the **SGP (Security Gateway Portal)** Dashboard.

**You have to “Enable” each brand as you like to use within the LOOQIT software.**

## VW AG

**Audi**

**Seat**

**Skoda**

**VW**

## FCA

**Alfa Romeo**

**Fiat**

**Jeep**

**Lancia**

## MERCEDES

**Mercedes**

**Smart**

# SGP – AVAILABLE BRANDS

WOW! LOOQIT 5.39.00

**IVECO**

**Daily VII**

We can now proudly inform that we have been trusted by **IVECO** to access their protected OE data via our Secure Gateway solution. Affected is the IVECO DAILY VII only (so far).

The Secure Gateway with IVECO access is an add-on to our diagnostic software. Due to the massive costs for this brand access, we require an additional license for which a fee is charged.

Later this year we will inform in details about licenses and costs.

Be curious about the detailed information. Your sales partners will inform you!



# WOW! WÜRTH ONLINE WORLD GMBH

## WOW! Würth Online World GmbH

Schliffenstrasse 22  
74653 Künzelsau - Gaisbach  
Germany

Phone +49 7940 98188-0  
Fax +49 7940 98188-1099  
info@wow-portal.com  
www.wow-portal.com



[Website](#)

www.wow-portal.com



[YouTube](#)

@ WOW! Würth Online World GmbH



[LinkedIn](#)

@ WOW! Würth Online World GmbH



[Facebook](#)

@ WOW Würth Online World



[Instagram](#)

@ wuerthonlineworld

